

**United Nations Development Programme**  
**Philippines**



Empowered lives.  
Resilient nations.

**Project Title:**

**Enhancing Human Security in the Philippines by Addressing  
the Socio-Economic Impact of COVID-19 in the Philippines**

**2020 Annual Work Plan**

**Implementing Partner:** United Nations Development Programme

**Responsible Parties:** United Nations Development Programme,

**Project Description**

The Philippines' initial response to COVID 19 has seen the early enforcement of the enhanced community quarantine that has helped reduce the number of infected people. Strong macro-economic fundamentals may prevent the country from a severe recession. An initial social amelioration program of US\$ 3.99 billion is being implemented to provide additional cash transfers to 18 million affected families, and 3.5 million employees of small-and-medium-enterprises are being assisted with an additional USD 1 billion. Credit, relief supplies and food aid has helped some low-income communities. Medical equipment is being delivered.

Significant challenges however remain. GDP will contract significantly and may be less than 1% and possibly in negative figures for 2020, and the nature of economic recovery in the out years remains unclear at this point. A significant uptick in cases is still possible across the country placing huge stress on the health system. Informal laborers, traders and small farmers face a catastrophic impact as local value chains are disrupted. Day and contract workers have seen their incomes disappear. Domestic violence has risen in certain quarantined communities. Access to medical services has been uneven. Procurement options are limited with huge demands on global supply, and the flow of essential supplies is severely tested. Cash payments to the most in need through a largely manual system will constrain timely and transparent disbursements. Violent extremists in southern Philippines are already using the crisis to create anti-government narratives. Loss of faith in the new Bangsamoro Autonomous Region in Muslim Mindanao (BARMM) Government due to an ineffective COVID 19 response could destabilize the ongoing transition.

Country Programme Period: 2019-2023

Project ID/Output IDs: 00127818 / 00121742

Project Start Date: 15 June 2020

Project End Date: 31 March 2021

Project Board Meeting/LPAC Date: July 2020

2020 AWP budget: USD 2,018,559.00

Total resources required USD 2,613,600.00

Total allocated resources: \_\_\_\_\_

• Regular: \_\_\_\_\_

• Other:

○ Donor (Japan) USD 2,613,600.00

○ Gov't

Unfunded budget: \_\_\_\_\_

In-kind Contributions: \_\_\_\_\_

Agreed by UNDP:

**Enrico Gaveglia**, Deputy Resident Representative

Date:

## I. PROGRAMME ALIGNMENT

<b>A.1 2019-2023 PFSD/CPD Outcome alignment</b>	<p>1: The most marginalized, vulnerable, and at-risk people and groups benefit from inclusive and quality services and live in a supportive environment wherein their nutrition, food security, and health are ensured/protected.</p>																		
<b>A.2 2019-2023 CPD Output Indicator alignment</b>	<p>1.2.1 Number of UNDP-assisted NGAs and LGUs implementinbg reforms and innovations for delivery and monitoring of services, public finance management, or public procurement.</p> <table border="1" data-bbox="531 516 1688 724"> <thead> <tr> <th colspan="2">Baseline</th> <th colspan="2">Targets / Cumulative Results</th> <th colspan="2">End of Project Target</th> </tr> <tr> <th>Year</th> <th>Quantity/ Points /Rating</th> <th>2020</th> <th>2021</th> <th>Target</th> <th>Actual</th> </tr> </thead> <tbody> <tr> <td>2017</td> <td>NGA 2; LGU 0 (2017)</td> <td>2</td> <td>2</td> <td>2</td> <td></td> </tr> </tbody> </table>	Baseline		Targets / Cumulative Results		End of Project Target		Year	Quantity/ Points /Rating	2020	2021	Target	Actual	2017	NGA 2; LGU 0 (2017)	2	2	2	
Baseline		Targets / Cumulative Results		End of Project Target															
Year	Quantity/ Points /Rating	2020	2021	Target	Actual														
2017	NGA 2; LGU 0 (2017)	2	2	2															
<b>A.3 2018-2021 UNDP SP IRRF Output Indicator Alignment</b>	<p>SP Output Indicator 1.3.1: National capacities and evidence-based assessment and planning tools enable gender-responsive and risk-informed development investments, including for response to and recovery from crisis</p> <p>Indicator: Number of countries with recovery plans and systems in place utilizing sex, age and disability disaggregated data and gender analysis</p> <table border="1" data-bbox="531 987 1688 1195"> <thead> <tr> <th colspan="2">Baseline</th> <th colspan="2">Targets / Cumulative Results</th> <th colspan="2">End of Project Target</th> </tr> <tr> <th>Year</th> <th>Quantity/ Points /Rating</th> <th>2020</th> <th>2021</th> <th>Target</th> <th>Actual</th> </tr> </thead> <tbody> <tr> <td>2017</td> <td>TBD</td> <td>1</td> <td>1</td> <td>2</td> <td></td> </tr> </tbody> </table>	Baseline		Targets / Cumulative Results		End of Project Target		Year	Quantity/ Points /Rating	2020	2021	Target	Actual	2017	TBD	1	1	2	
Baseline		Targets / Cumulative Results		End of Project Target															
Year	Quantity/ Points /Rating	2020	2021	Target	Actual														
2017	TBD	1	1	2															
<b>A.4 Sustainable Development Goals Target Alignment</b>	<p>Sustainable Development Goal 16.1: Significantly reduce all forms of violence and related death rates everywhere</p>																		

<p><b>A.5 Project Document Output Indicators</b></p> <p>Output 2.1: Capacities of relevant government agencies built for integrated crisis management and responses</p>	<p><i>Output Indicator 2.1.1: No. of Government Agencies or units supported in the establishment of data tech and visualisation platforms</i></p> <table border="1" data-bbox="556 240 1776 394"> <thead> <tr> <th colspan="2">Baseline</th> <th colspan="2">Targets / Cumulative Results</th> <th colspan="2">End of Project Target</th> </tr> <tr> <th>Year</th> <th>Quantity/ Points /Rating</th> <th>2020</th> <th>2021</th> <th>Target</th> <th>Actual</th> </tr> </thead> <tbody> <tr> <td>2019</td> <td>0</td> <td>1</td> <td>2</td> <td>2</td> <td></td> </tr> </tbody> </table> <p><i>Output Indicator 2.1.2 No. of Government Agencies or Units supported in crisis management and protecting vulnerable groups</i></p> <table border="1" data-bbox="556 475 1776 630"> <thead> <tr> <th colspan="2">Baseline</th> <th colspan="2">Targets / Cumulative Results</th> <th colspan="2">End of Project Target</th> </tr> <tr> <th>Year</th> <th>Quantity/ Points /Rating</th> <th>2020</th> <th>2021</th> <th>Target</th> <th>Actual</th> </tr> </thead> <tbody> <tr> <td>2019</td> <td>0</td> <td>1</td> <td>2</td> <td>2</td> <td></td> </tr> </tbody> </table>	Baseline		Targets / Cumulative Results		End of Project Target		Year	Quantity/ Points /Rating	2020	2021	Target	Actual	2019	0	1	2	2		Baseline		Targets / Cumulative Results		End of Project Target		Year	Quantity/ Points /Rating	2020	2021	Target	Actual	2019	0	1	2	2	
Baseline		Targets / Cumulative Results		End of Project Target																																	
Year	Quantity/ Points /Rating	2020	2021	Target	Actual																																
2019	0	1	2	2																																	
Baseline		Targets / Cumulative Results		End of Project Target																																	
Year	Quantity/ Points /Rating	2020	2021	Target	Actual																																
2019	0	1	2	2																																	
<p>Output 2.2: Safeguarding Human Rights and Protecting Vulnerable Groups</p>	<p><i>Output Indicator 2.2.1: No. of Government Agencies or Units strengthened in terms of capacities to work with community groups to promote and protect rights under the quarantine measures</i></p> <table border="1" data-bbox="556 792 1776 946"> <thead> <tr> <th colspan="2">Baseline</th> <th colspan="2">Targets / Cumulative Results</th> <th colspan="2">End of Project Target</th> </tr> <tr> <th>Year</th> <th>Quantity/ Points /Rating</th> <th>2020</th> <th>2021</th> <th>Target</th> <th>Actual</th> </tr> </thead> <tbody> <tr> <td>2019</td> <td>0</td> <td>1</td> <td>1</td> <td>1</td> <td></td> </tr> </tbody> </table>	Baseline		Targets / Cumulative Results		End of Project Target		Year	Quantity/ Points /Rating	2020	2021	Target	Actual	2019	0	1	1	1																			
Baseline		Targets / Cumulative Results		End of Project Target																																	
Year	Quantity/ Points /Rating	2020	2021	Target	Actual																																
2019	0	1	1	1																																	
<p>Output 3: Addressing Human Rights and the Socio-Economic Impact of Covid19</p>	<p><i>Output Indicator 3.1: No. of Reports generated from the Socio-Economic Impact Assessments</i></p> <table border="1" data-bbox="556 1075 1776 1229"> <thead> <tr> <th colspan="2">Baseline</th> <th colspan="2">Targets / Cumulative Results</th> <th colspan="2">End of Project Target</th> </tr> <tr> <th>Year</th> <th>Quantity/ Points /Rating</th> <th>2020</th> <th>2021</th> <th>Target</th> <th>Actual</th> </tr> </thead> <tbody> <tr> <td>2019</td> <td>0</td> <td>1</td> <td>2</td> <td>2</td> <td></td> </tr> </tbody> </table> <p><i>Output Indicator 3.2: No. of Government Agencies or Units or civic organizations supported in the development of innovative approaches to recovery</i></p> <table border="1" data-bbox="556 1323 1776 1477"> <thead> <tr> <th colspan="2">Baseline</th> <th colspan="2">Targets / Cumulative Results</th> <th colspan="2">End of Project Target</th> </tr> <tr> <th>Year</th> <th>Quantity/ Points /Rating</th> <th>2020</th> <th>2021</th> <th>Target</th> <th>Actual</th> </tr> </thead> <tbody> <tr> <td>2019</td> <td>0</td> <td>1</td> <td>2</td> <td>2</td> <td></td> </tr> </tbody> </table>	Baseline		Targets / Cumulative Results		End of Project Target		Year	Quantity/ Points /Rating	2020	2021	Target	Actual	2019	0	1	2	2		Baseline		Targets / Cumulative Results		End of Project Target		Year	Quantity/ Points /Rating	2020	2021	Target	Actual	2019	0	1	2	2	
Baseline		Targets / Cumulative Results		End of Project Target																																	
Year	Quantity/ Points /Rating	2020	2021	Target	Actual																																
2019	0	1	2	2																																	
Baseline		Targets / Cumulative Results		End of Project Target																																	
Year	Quantity/ Points /Rating	2020	2021	Target	Actual																																
2019	0	1	2	2																																	

## 2020 Annual Work Plan

**Project Title:** Enhancing Human Security in the Philippines by Addressing the Socio-Economic Impact of COVID-19 in the Philippines

**Project ID / Output ID:** 00127818 / 00121742

**Implementing Partner:** United Nations Development Programme

**CPD Outcome/Output Alignment:** CPD Outcome 1: The most marginalized, vulnerable, and at-risk people and groups benefit from inclusive and quality services and live in a supportive environment wherein their nutrition, food security, and health are ensured/protected

EXPECTED OUTPUTS					
<b>Output 2.1:</b> Capacities of relevant government agencies built for integrated crisis management and responses					
Project Output Indicator/s	Baseline		Annual Target (2020)	Cumulative Target (from Start Year) Start year: 2020	End-of-Project Target End year: 2021
	Year	Quantity/ Points /Rating			
2.1.1 No. of Government Agencies or units supported in the establishment of data tech and visualisation platforms	2019	0	1	2	2
2.1.2 No. of Government Agencies or Units supported in crisis management and protecting vulnerable groups	2019	0	1	2	2

PLANNED ACTIVITIES (for Output No. 2.1)						PLANNED BUDGET (for Output No.2)				
Activity/Sub-Activity Description	Activity Target <sup>1</sup> (provide guidance)	TIMEFRAME				RESPONSIBLE PARTY <sup>2</sup>	Funding Source/Donor	Budget		Amount US\$ 1=PhP 49.925
		Q1	Q2	Q3	Q4			Code	Description	
<b>Activity 2.1.1 Support to the establishment of the Pintig Lab and data tech and visualisation platforms</b>										
[ATLAS Sub-activity 1] Operationalization of the Pintig Lab for NCR	Data from Pintig Lab and other established data tech and visualization platforms used by at least 2 government agencies to inform recovery planning			x	x	UNDP	Japan	72100	Contractual services	230,000
								71400	Service contract	70,000
[ATLAS Sub-activity 2] Setting up of the Enhanced Local Manufacturing Platform in BARMM				X	X			71300	Local Consultant	30,000
					75700	Learning cost	50,000			
					72100	Contractual services	20,000			
[ATLAS Sub-activity 3] Setting up of the Kedu Lab Platform for barmm			X	X			71400	Service contract	150,000	
<b>Activity 2.1.2 Support to enhancing BARMM LGU capacities for crisis management</b>										

<sup>1</sup> Specify units, e.g., number of trainings, number of participants, number of representations, etc.

<sup>2</sup> Indicate who will deliver the activity, e.g., UNDP, IP, or Responsible Parties (indicate name of RP)

PLANNED ACTIVITIES (for Output No. 2.1)						PLANNED BUDGET (for Output No.2)					
Activity/Sub-Activity Description	Activity Target <sup>1</sup> (provide guidance)	TIMEFRAME				RESPONSIBLE PARTY <sup>2</sup>	Funding Source/Donor	Budget		Amount	
		Q1	Q2	Q3	Q4			Code	Description	US\$ 1=PhP 49.925	
[ATLAS Sub-activity 4] Establishment of Programme Monitoring and Implementation Unit for the BARMM Office of the Interim Chief Minister	At least 2 government agencies strengthened in terms of crisis management capabilities through the establishment of a Programme Monitoring and Implementation System for Covid 19 Response and Recovery			x	x	UNDP	Japan	71200	International consultant	50,000	
								71300	Local consultant	50,000	
								75700	Learning costs	30,000	
								71600	Travel	5,000	
								72500	Supplies	5,000	
								72200	ICT Equipment	10,000	
[ATLAS Sub-activity 5] Support for post-Covid 19 recovery plan for BARMM/LGUs					x			x	71300	Local consultant	50,000
[ATLAS Sub-activity 6] Development of community resilience plans					x			x	75700	Learning costs	35,000
						71600	Travel	5,000			
[ATLAS Sub-activity 7] Support to peace process mechanisms and BARMM READi to deal with Covid19 impacts on social cohesion, and ongoing and new conflicts				x	x	71300	Local consultant	10,000			
						75700	Learning costs	30,000			
						72200	Equipment	10,000			
						71600	Travel	5,000			
[ATLAS Sub-activity 8] Micro-grants/ direct support to NGOs/LGUs				x	x	72600	Grants	75,000			
						75700	Learning costs	5,000			
						71600	Travel	5,000			
<b>Sub TOTAL</b>									<b>930,000</b>		
<b>75100 - Facilities and Administration(GMS)</b>									<b>74,400</b>		
<b>OUTPUT 2.1 Sub TOTAL</b>									<b>1,004,400</b>		

EXPECTED OUTPUTS					
Output 2.2: Safeguarding Human Rights and Protecting Vulnerable Groups					
Project Output Indicator/s	Baseline		Annual Target (2020)	Cumulative Target Start year: 2020	End-of-Project Target End year: 2021
	Year	Quantity/ Points /Rating			
2.2.1 No. of Government Agencies or Units strengthened in terms of capacities to work with community groups to promote and protect rights under the quarantine measures	2019	0	1	1	1

PLANNED ACTIVITIES (for Output No. 2.2)						PLANNED BUDGET (for Output No.2)				
Activity/Sub-Activity Description	Activity Target <sup>3</sup> (provide guidance)	TIMEFRAME				RESPONSIBLE PARTY <sup>4</sup>	Funding Source/Donor	Budget		Amount
		Q1	Q2	Q3	Q4			Code	Description	US\$ 1=PhP 49.925
Activity 2.2.1 Strengthening the Capacity of the Commission on Human Rights (CHR) to work with community groups to promote and protect rights under the quarantine measures										
[ATLAS Sub-activity 9] Collection and documentation (with infographics & data analytics) on local policy issued on anti-discrimination in the Philippines	Locally issued Anti-Discrimination policy and data analytics of LGUs in the Philippines mapped and documented			X	X	UNDP	Japan	72600	Grants (Institutions and Other Beneficiaries)	20,000
[ATLAS Sub-activity 10] Popularize and produce simple e-learning guides on COVID19 for migrant rights, women's rights, persons with disabilities, older persons and other vulnerable sectors	10 e-learning guides for the vulnerable sectors popularized			X	X			72600	Grants (Institutions and Other Beneficiaries)	15,000
[ATLAS Sub-activity 11] Documentation and publication local stories of vulnerable sectors during the pandemic	Local stories of vulnerable sectors during the pandemic documented and published			X	X			72600	Grants (Institutions and Other Beneficiaries)	20,000
<b>Sub-TOTAL</b>									<b>55,000</b>	
<b>75100 - Facilities and Administration(GMS)</b>									<b>4,400</b>	
<b>OUTPUT 2.2 Sub-TOTAL</b>									<b>59,400</b>	

EXPECTED OUTPUTS					
Output 3 : Socio-economic impact of COVID 19 is addressed					
Project Output Indicator/s	Baseline		Annual Target (2020)	Cumulative Target Start year: 2020	End-of-Project Target End year: 2020
	Year	Quantity / Points / Rating			
3.1 No. of government agencies making use of the reports generated from the Socio-Economic Impact Assessments	2019	0	1	2	2
3.2 No. of Government Agencies or Units or civic organizations which developed innovative approaches to recovery	2019	0	1	2	2

<sup>3</sup> Specify units, e.g., number of trainings, number of participants, number of representations, etc.

<sup>4</sup> Indicate who will deliver the activity, e.g., UNDP, IP, or Responsible Parties (indicate name of RP)

PLANNED ACTIVITIES (for Output No. 3)						PLANNED BUDGET (for Output No.1.2)							
Activity/Sub-Activity Description	Activity Target <sup>5</sup> (provide guidance)	TIMEFRAME				RESPONSIBLE PARTY <sup>6</sup>	Funding Source/Donor	Budget		Amount US\$ 1 = PhP 49.925			
		Q1	Q2	Q3	Q4			Code	Description				
<b>Activity 3.1: Conduct of Meso-, macro- and micro- level socio-economic impact assessments</b>													
[ATLAS Sub-activity 12] Socio-economic impact assessment of COVID19 in BARMM (Rapid Assessment)	At least 2 Assessment Reports produced to inform recovery planning			x	x	UNDP	Japan	71600	Travel	10,000			
										72600	Grants	31,500	
										72400	Printing and publication	5,000	
										72300	Miscellaneous	20,000	
[ATLAS Sub-activity 13] Socio-economic impact assessment of COVID19 in BARMM (In-depth assessment)					x			x			71300	Local consultant	29,500
[ATLAS Sub-activity 14] Socio-economic impact assessment of COVID19 in Mindanao					x			x			72600	Grants	50,000
[ATLAS Sub-activity 15] Updating of the Mindananao Development and Peace Framework					x			x			72600	Grants	25,000
[ATLAS Sub-activity 16] Household Socio-economic impact assessment				x	x			71300	Local consultant	100,000			
								72600	Grants	50,000			
[ATLAS Sub-activity 17] MSME Survey				x	x			71300	Local consultant	50,000			
								72600	Grants	36,000			
<b>Activity 3.2: Support to LGUs and civic organizations in the development of innovative approaches to recovery</b>													
[ATLAS Sub-activity 18] Development of innovative solutions for a) crowd funding, b) sustainable livelihood and c) participatory governance for the new normal that were developed through LGU-CSO-startup/innovator collaboration	At least 2 LGUs or communities have the capacity to use innovative recovery approaches			X	X	UNDP	Japan	72100	Contractual services	20,000			
								72600	Grants	160,000			

<sup>5</sup> Specify units, e.g., number of trainings, number of participants, number of representations, etc.

<sup>6</sup> Indicate who will deliver the activity, e.g., UNDP, IP, or Responsible Parties (indicate name of RP)

PLANNED ACTIVITIES (for Output No. 3)						PLANNED BUDGET (for Output No.1.2)					
Activity/Sub-Activity Description	Activity Target <sup>5</sup> (provide guidance)	TIMEFRAME				RESPONSIBLE PARTY <sup>6</sup>	Funding Source/Donor	Budget		Amount US\$ 1 = PhP 49.925	
		Q1	Q2	Q3	Q4			Code	Description		
[ATLAS Sub-activity 19] Conduct of experimentation by city governments on a) distributed service delivery solutions; b) digitization of safety net payments; 3) alternative sustainable livelihoods for informal/displaced workers and micro and small enterprises (MSME); and 4) inclusive rural-urban supply chains to support local economic development								71300	Local consultant	18,000	
								71200	International consultant	30,000	
									71400	Service contract	10,000
									75700	Learning costs	30,000
						X	X		72100	Contractual services	20,000
[ATLAS Sub-activity 20] Brand visibility and related expenses										(budget earmarked for 2021)	
<b>Sub TOTAL</b>									<b>724,000</b>		
<b>75100 - Facilities and Administration(GMS)</b>									<b>57,920</b>		
<b>OUTPUT 3 Sub TOTAL</b>									<b>781,920</b>		

PLANNED ACTIVITIES (Programme Management)						PLANNED BUDGET (for PM)				
Activity/Sub-Activity Description	Activity Target <sup>7</sup> (provide guidance)	TIMEFRAME				RESPONSIBLE PARTY <sup>8</sup>	Funding Source/Donor	Budget		Amount US\$ 1 = PhP 49.925
		Q1	Q2	Q3	Q4			Code	Description	
[ATLAS Sub-activity 21] Direct Project Cost (Programme Management)	Personnel					UNDP	Japan	71400	Service Contract	21,640
	COs support (solicitation and contracting of the consultants)							74500	Procurement services	21,000
								64300	FTA salaries	33,600
								73100	Rental & Maintenance-Premises	21,000
	COs support (time of COs (programmes and finance - FTAs staff)	X	X	X	X			72400	Communication	14,496
	Operating Cost							75700	Learning Cost (training, workshops and conference)	14,000
	Communications							71600	Travel	9,800
	Monitoring and Support							74100	Professional Services (Audit)	7,000
Audit Cost										
Evaluation Cost							71300	Local Consultants (M&E)	17,500	

<sup>7</sup> Specify units, e.g., number of trainings, number of participants, number of representations, etc.

<sup>8</sup> Indicate who will deliver the activity, e.g., UNDP, IP, or Responsible Parties (indicate name of RP)



PLANNED ACTIVITIES (Programme Management)						PLANNED BUDGET (for PM)				
Activity/Sub-Activity Description	Activity Target <sup>7</sup> (provide guidance)	TIMEFRAME				RESPONSIBLE PARTY <sup>8</sup>	Funding Source/Donor	Budget		Amount
		Q1	Q2	Q3	Q4			Code	Description	US\$ 1 = PhP 49.925
							Sub TOTAL		160,035	
							75100 - Facilities and Administration(GMS)		12,803	
							DPC (Programme Management) Sub TOTAL		172,839	
							GRAND TOTAL		2,018,559	

---

## II. MANAGEMENT ARRANGEMENTS

A Project Advisory Board will be established to:

- Provide inputs relative to the project's overall strategic directions
- Provide inputs as may be necessary to ensure continued relevance and effectiveness to achieve the project's intended results
- Review and approve project work plans when required and authorizes any major deviation from these agreed work plans.
- Provide inputs / advise on solutions towards addressing bottlenecks and challenges in project implementation
- Project reviews at designated decision points during the running of a project, or as necessary when raised by the Project Manager

The Project Advisory Board members are:

- The Project Board Executive: represented by the UNDP Resident Representative or the Deputy Resident Representative and the Donor Representative (Japan) who will act as Co-Chairs of the Board
- Project Beneficiaries: Government Agency Representatives (such as MILG BARMM and OICM), Civil Society Organization Representatives (CSOs) or Community-Based Organizations (CBOs).

Quality Assurance (to ensure that the project remains strategic, relevant, efficient, effective, sustainable, and meets social and environmental standards) will be the responsibility of the Results and Quality Team (RQT)

The Peace Programme Team (PPT) will provide project management and support services in close coordination with the primary responsible partner and the other Responsible Parties.

Meanwhile, the Project Manager has the authority to run the project on a day-to-day basis on behalf of the Project Board within the constraints laid down by the Board. The Project Manager is responsible for day-to-day management and decision-making for the project. The Project Manager's prime responsibility is to ensure that the project produces the results specified in the project document, to the required standard of quality and within the specified constraints of time and cost.

**The specific responsibilities** of the Project Manager would include the following:

*Overall project management:*

- Manage the realization of project outputs through activities;
- Provide direction and guidance to project team(s)/ responsible party (ies);
- Liaise with the Project Board or its appointed Project Assurance roles to assure the overall direction and integrity of the project;
- Identify and obtain any support and advice required for the management, planning and control of the project;
- Responsible for project administration;
- Liaise with any suppliers;
- May also perform Team Manager and Project Support roles;

*Running a project*

- Plan the activities of the project and monitor progress against the initial quality criteria.
- Mobilize goods and services to initiative activities, including drafting TORs and work specifications;
- Monitor events as determined in the Monitoring & Communication Plan, and update the plan as required;
- Manage requests for the provision of financial resources by UNDP, using advance of funds, direct payments, or reimbursement using the FACE (Fund Authorization and Certificate of Expenditures);
- Monitor financial resources and accounting to ensure accuracy and reliability of financial reports;
- Manage and monitor the project risks as initially identified in the Project Brief appraised by the LPAC, submit new risks to the Project Board for consideration and decision on possible actions if required; update the status of these risks by maintaining the Project Risks Log;
- Be responsible for managing issues and requests for change by maintaining an Issues Log.
- Prepare the Project Quarterly Progress Report (progress against planned activities, update on Risks and Issues, expenditures) and submit the report to the Project Board and Project Assurance;

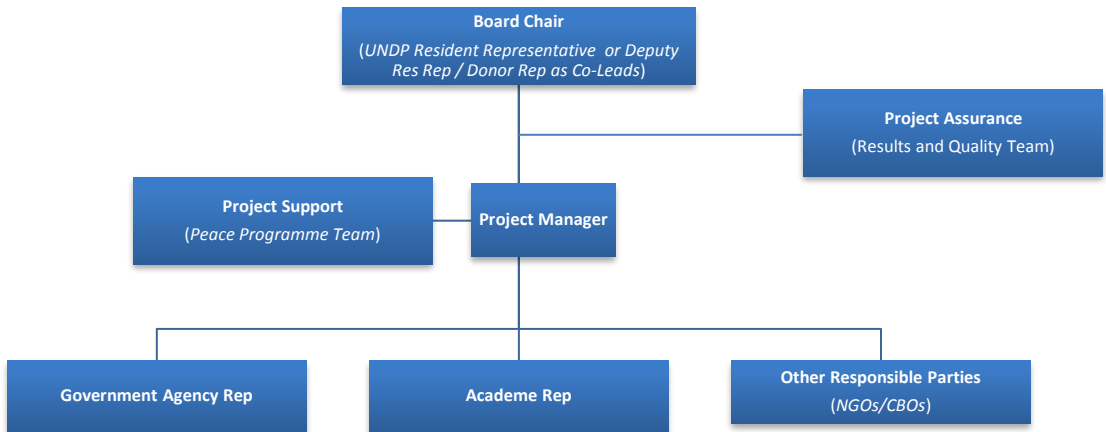
- Prepare the Annual review Report, and submit the report to the Project Board and the Outcome Board;
- Based on the review, prepare the AWP for the following year, as well as Quarterly Plans if required.

*Closing a Project*

- Prepare Final Project Review Reports to be submitted to the Project Board and the Outcome Board;
- Identify follow-on actions and submit them for consideration to the Project Board;
- Manage the transfer of project deliverables, documents, files, equipment and materials to national beneficiaries;
- Prepare final CDR/FACE for signature by UNDP and the Implementing Partner.

The Project will be implemented by UNDP through Direct Implementation (DIM)

**Project Board Structure**



### III. MONITORING AND EVALUATION PLAN

#### Monitoring Plan

Expected Results (Outcome & Output)	Indicators	Data Collection Methods	Time or Schedule and Frequency	Means of Verification: Data Source and Type	Responsibilities	Resources	Risks and assumptions
<p><b>Outcome 1: The most marginalized, vulnerable, and at-risk people and groups benefit from inclusive and quality services and live in a supportive environment wherein their nutrition, food security, and health are ensured/protected.</b></p>	<p>Outcome 1 Indicator: No. of UNDP-assisted national government agencies and LGUs implementing reforms and innovations for: a) Delivery and monitoring of services; b) public finance management, and; c) public procurement</p> <p>Baseline: NGA 2; LGU 0 (2017) Target: 8; 100 (2023)</p>	<p>Progress reports and minutes of meetings</p>	<p>Quarterly</p> <p>Following the frequency cited in the monitoring plan, progress data against the results indicators will be collected and analysed to assess the progress of the project in achieving the agreed outputs.</p>	<p>Data collection from government agencies/websites</p> <p>Primary data collection (field monitoring/ observation)</p> <p>Primary data from government agencies</p>	<p>- Coordinating data collection: Project Manager</p> <p>- Collecting data: Project M&amp;E Officer</p> <p>- Verifying/ triangulating data quality: Programme Officer</p> <p>- Analysing the data: Programme Officer and Manager</p>	<p>USD:</p>	<p><u>Risks:</u> (Please refer to risk log in Section V below)</p> <p><u>Assumptions</u> A key assumption is that the Philippine Government and key parties to peace agreements will remain committed to completing the transition process towards a peaceful Bangsamoro. With the generally positive results of the plebiscite on the</p>

Expected Results (Outcome & Output)	Indicators	Data Collection Methods	Time or Schedule and Frequency	Means of Verification: Data Source and Type	Responsibilities	Resources	Risks and assumptions
<b>Output 2.1:</b> Capacities of relevant government agencies built for integrated crisis management and responses	<u>Indicator 2.1.1:</u> No. of Government Agencies or units supported in the establishment of data tech and visualisation platforms <u>Baseline: 0</u> <u>Target: 2</u>  <u>Indicator 2.1.2:</u> No. of Government Agencies or Units supported in crisis management and protecting vulnerable groups <u>Baseline: 0</u> <u>Target: 2</u>	Progress reports and minutes of meetings	Quarterly  Following the frequency cited in the monitoring plan, progress data against the results indicators will be collected and analysed to assess the progress of the project in achieving the agreed outputs.	Data collection from government agencies/websites  Primary data collection (field monitoring/ observation)  Primary data from government agencies	- Coordinating data collection: Project Manager  - Collecting data: Project M&E Officer  - Verifying/ triangulating data quality: Programme Officer  - Analysing the data: Programme Officer and Manager	USD:	BOL, it is hoped that this will help quiet the discontent among vulnerable groups. Another assumption pertains to the capacities of the peace infrastructure to prevent and manage any major outbreaks of violence. It is assumed that joint mechanisms remain capable of responding effectively to armed skirmishes and other violent actions that may trigger bigger outbursts of violence. Continuous assessment of the peace and security situation and close coordination with peace and security sector actors can help the Project Board to make the appropriate policy and program adjustments to contribute to conflict prevention and management.  Another assumption is that the local government units will be supportive of efforts to strengthen local resilience and the conduct
<b>Output 2.2:</b> Safeguarding Human Rights and Protecting Vulnerable Groups	<u>Indicator 2.2.1:</u> No. of Government Agencies or Units strengthened in terms of capacities to work with community groups to promote and protect rights under the quarantine measures <u>Baseline: 0</u> <u>Target: 1</u>	Progress reports and minutes of meetings	Quarterly  Following the frequency cited in the monitoring plan, progress data against the results indicators will be collected and analysed to assess the progress of the project in achieving the agreed outputs.	Data collection from government agencies/websites  Primary data collection (field monitoring/ observation)  Primary data from government agencies	- Coordinating data collection: Project Manager  - Collecting data: Project M&E Officer  - Verifying/ triangulating data quality: Programme Officer  - Analysing the data: Programme Officer and Manager	USD:	

Expected Results (Outcome & Output)	Indicators	Data Collection Methods	Time or Schedule and Frequency	Means of Verification: Data Source and Type	Responsibilities	Resources	Risks and assumptions
<b>Output 3</b> Socio-economic impact of COVID 19 is addressed	<p><u>Indicator 3.1</u> No. of Government Agencies or Units making use of the reports generated from the Socio-Economic Impact Assessments <u>Baseline: 0</u> <u>Target: 2</u></p> <p><u>Indicator 3.2</u> No. of Government Agencies or Units or civic organizations supported in the development of innovative approaches to recovery <u>Baseline: 0</u> <u>Target: 2</u></p>	Progress reports and minutes of meetings	<p>Quarterly</p> <p>Following the frequency cited in the monitoring plan, progress data against the results indicators will be collected and analysed to assess the progress of the project in achieving the agreed outputs.</p>	<p>Data collection from government agencies/websites</p> <p>Primary data collection (field monitoring/ observation)</p> <p>Primary data from government agencies</p>	<p>- Coordinating data collection: Project Manager</p> <p>- Collecting data: Project M&amp;E Officer</p> <p>- Verifying/ triangulating data quality: Programme Officer</p> <p>- Analysing the data: Programme Officer and Manager</p>	USD:	<p>of socio-economic baseline studies.</p> <p>It is also assumed that local groups, including civil society organizations, religious leaders, academic institutions and other key stakeholders will be willing to participate in the Project's activities and initiatives. There is a risk that differences in political and religious perspectives among Project stakeholders may hamper the implementation of the Project. To mitigate this, the conduct of regular consultations, dialogues and even mediation initiatives will be undertaken.</p>

**Monitoring & Evaluation Budget**

Total Budget on Monitoring in Reporting Year  
(former).

USD

Total budget on Decentralized Evaluations in  
Reporting Year  
(Mid Term / Final)

USD \_\_\_\_\_

#### IV. ANNUAL PROCUREMENT PLAN

<b>Project Title:</b>	Enhancing Human Security in the Philippines by Addressing the Socio-Economic Impact of COVID-19 in the Philippines
<b>Project Type :</b>	Direct Implementation Modality (DIM)
<b>Date Prepared:</b>	July 2020

Atlas Project ID No.	Category (Identify if Goods, IC, Civil Works, Recurring Cost, Consulting Services)	Brief Description of goods, services or works required	Unit of Measure	Quantity	Estimated Unit Price in USD	Estimated Total Price in USD	Requested delivery date (for goods and works) or start of services (if services)	Target Date for the Submission of TOR/Specs/SOWs to Procurement Team
<b>Output 2.1: Capacities of relevant government agencies built for integrated crisis management and responses</b>								
00127818	Consulting Services	Operationalization of the Pintig Lab for NCR	Firm/Institution	1	230,000.00	230,000.00	August 2020	July 2020
00127818	Individual Contract	Local Consultant -Support in setting up of the Enhanced Local Manufacturing Platform in BARMM	pax	1	30,000.00	30,000.00	August 2020	July 2020
00127818	Services	Workshop / Seminar Cost (Location and/or Catering)-Capacity building/knowledge transfer	event	3	50,000.00	50,000.00	August 2020	July 2020
00127818	Individual Contract	International Consultant-Technical Advisor (STRAT planning, monitoring and Evaluation)	consultant	2	19,200.00	38,400.00	August 2020	July 2020
00127818	Individual Contract	Local Consultant-Assessment of Socio-Economic Impacts and Response to COVID-19	consultant	1	4,700.00	4,700.00	August 2020	July 2020
00127818	Individual Contract	Local Consultant-Assessment of Socio-Economic Impacts and Response to COVID-19	consultant	1	8,700.00	8,700.00	August 2020	July 2020

00127818	Services	Workshop / Seminar Cost (Location and/or Catering)-Start planning and familiarization exercise	workshops	3	30,000.00	90,000.00	Áugust 2020	July 2020
00127818	Goods	ICT equipment	equipment	1	10,000.00	10,000.00	Áugust 2020	July 2020
00127818	Individual Contract	Senior Advisors	consultant	3	50,000.00	150,000.00	Áugust 2020	July 2020
00127818	Services	Workshop / Seminar Cost (Location and/or Catering)-Development of Community Resilience Plans	workshops	2	35,000.00	70,000.00	Óctober 2020	Áugust 2020
00127818	Individual Contract	Local consultant -Capacity-building for peace process mechanisms and BARMM READi	consultant	1	10,000.00	10,000.00	Óctober 2020	Áugust 2020
00127818	Services	Workshop / Seminar Cost (Location and/or Catering)-Capacity assessment of Peace Process mechanisms and BARMM READi relative to capacities on conflict prevention/management/resolution and peacebuilding	workshops	2	30,000.00	60,000.00	September 2020	Áugust 2020
00127818	Services	CSO/NGO engagements for multistakeholder support for BARMM crisis management/risk communication and community engagement	NGO	1	75,000.00	75,000.00	December 2020	Áugust 2020
00127818	Services	NGO Engagements -Collection and documentation (with infographics & data analytics) on local policy issued on anti-discrimination in the Philippines	NGO	1	20,000.00	20,000.00	December 2020	Áugust 2020
00127818	Services	NGO Engagement-Popularize and produce simple e-learning guides on COVID19 for migrant rights, women's rights, persons with disabilities, older persons and other vulnerable sectors	NGO	1	15,000.00	15,000.00	January 2021	Áugust 2020
00127818	Services	NGO Engagement -Documentation and publication local stories of vulnerable sectors during the pandemic	NGO	1	20,000.00	20,000.00	February 2021	Áugust 2020
00127818	Individual Contract	Local Consultants- Socio-economic impact assessment of COVID19 in BARMM (Rapid Assessment)	consultant	1	29,000.00	29,000.00	December 2020	Áugust 2020
00127818	Goods	Audio Visual & Print Production Cost	Printing		5,000.00	0.00	December 2020	Áugust 2020



00127818	Services	NGO Engagement -Socio-economic impact assessment of COVID19 in BARM (Rapid Assessment)	NGO	1	30,000.00	30,000.00	August 2020	July 2020
00127818	Individual Contract	Local Consultant - Socio-economic impact assessment of COVID19 in BARM (In-depth assessment)	consultant	1	29,500.00	29,500.00	December 2020	September 2020
00127818	Services	NGO Engagement - Socio-economic impact assessment of COVID19 in Mindanao	NGO	1	50,000.00	50,000.00	October 2020	August 2020
00127818	Services	NGO Engagement - Updating of the Mindananao Development and Peace Framework	NGO	1	25,000.00	25,000.00	December 2020	September 2020
00127818	Services	NGO Engagement - Household Socio-economic impact assessment	NGO	1	50,000.00	50,000.00	October 2020	August 2020
00127818	Services	NGO Engagement - MSME Survey	NGO	1	36,000.00	36,000.00	August 2020	July 2020
00127818	Individual Contract	Local Consultant/FIRM - technical support Household Socio-economic impact assessment	Firm/Institution	1	100,000.00	100,000.00	August 2020	July 2020
00127818	Individual Contract	Local Consultant - technical support MSME Survey	consultant	1	50,000.00	50,000.00	August 2020	July 2020
00127818	Services	FIRM/NGO on the Development of innovative solutions	Firm/Institution	1	100,000.00	100,000.00	March 2021	July 2020
00127818	Services	FIRM/NGO on the Development of innovative solutions	NGO	1	80,000.00	80,000.00	March 2021	July 2020
00127818	Services	International Consultant- Support to LGUs and civic organizations in the development of innovative approaches to recovery	consultant	1	30,000.00	30,000.00	March 2021	July 2020
00127818	Services	Local Consultant-Support to LGUs and civic organizations in the development of innovative approaches to recovery	consultant	1	18,000.00	18,000.00	March 2021	July 2020
00127818	Services	Workshop / Seminar Cost (Location and/or Catering)-Support to LGUs and civic organizations in the development of innovative approaches to recovery	event	2	15,000.00	30,000.00	March 2021	July 2020
00127818	Services	FIRM Engagement-Support to LGUs and civic organizations in the development of innovative approaches to recovery	Firm/Institution	1	20,000.00	20,000.00	March 2021	July 2020
					<b>1,305,100.00</b>			

## V. RISK LOG

#	Description	Date Identified	Type	Impact & Probability 1= Very Low 5= Very High	Counter-measures / Management response	Owner	Last Update	Status
1	Possibility of major outbreaks of violence caused by other armed group and other violent extremist groups in the Bangsamoro region	June 2020	Political	P = 3 I = 4	Continued support for capacity enhancement of Peace/Normalization bodies/mechanisms Regular assessment of peace and security situation and close coordination with peace and security sector	Programme manager	June 2020	No change
2	Differences in political and religious perspectives among project stakeholders leading to difficulties in project implementation	June 2020	Environmental	P = 3 I = 4	Conduct of regular consultation and dialogue initiatives among various stakeholders	Programme manager	June 2020	No change
3	Local environment, such as leader (religious, political, civic) attitude and practices, may not be supportive to capacity-development initiatives on dialogue, mediation, conflict resolution and other initiatives on prevention of violent extremism (e.g., common framework for Islamic teaching and preaching)	June 2020	Environmental	P = 3 I = 4	Regular mapping / assessment of peace and conflict dynamics, along with stakeholder positions, interests and needs Conduct of dialogues and consultation initiatives to facilitate consensus building on capacity development interventions for PVE	Programme manager	June 2020	No change
4	Mobility restrictions due to COVID-19	July 2020	Environmental	P = 4 I = 3	Contingency plans to address potential impacts will be formulated and operationalized when needed	Programme manager	June 2020	No change
5	Skeletal workforce in BARMM focused on relief and emergency operations, which may affect government commitment or capacity to co-implement identified activities	July 2020	Organizational	P = 3 I = 3	Conduct of regular consultation and dialogue initiatives among various stakeholders	Programme manager	June 2020	No change
6	Availability of stakeholders to be part of the KIIs and FGDs for the socioeconomic impact assessment	July 2020	Operational	P = 3 I = 4	Schedule meetings and activities ahead of time to ensure availability of stakeholders	Programme manager	June 2020	No change
7	Limited internet connectivity in BARMM which may affect response rate to SEIA surveys	July 2020	Environmental	P = 4 I = 3	To address, an offline survey tool is being developed	Programme manager	June 2020	No change